



KBV 312

27 METER FAST PATROL VESSEL **BALTIC 2403 PATROL**





# General

The 26.5 meter KBV 312 design is based on Baltic Workboats proven Patrol 24 platform. KBV 312 is equipped for patrol duties in harbours, coastal areas and offshore. These very advanced, versatile patrol vessels are used for maritime surveillance, border control and fisheries protection, environmental protection, fire-fighting, rescue, civil protection and diving operations.







Excellent sea keeping and extremely low fuel consumption.





# Wheelhouse

Alarm and monitoring, alarm acknowledgement and electrical system is handled through the Integrated Alarm, Monitoring and Control System (IAMCS) display. KBV 312 is equipped with full ECDIS with radar overlay and 27" LCD screens on workstations. All navigation equipment is fully integrated as IBS system.

Steering of the vessel during docking and normal driving is done using a joystick instead of a steering wheel, altogether there are five control stations.







The HVAC system of the vessel features full air conditioning, overpressure ventilation system with waste heat recovery and carbon filter for work in contaminated air.

To fulfill strict noise and vibration requirements, the vessel's wheelhouse is resiliently mounted, as is also the whole lower accommodation. As a result, the noise level at full speed in the wheelhouse is 55 dB whereas in accommodation areas it is 63 dB.





# Machinery & Propulsion

Giving the vessel best efficiency and overall performance, Volvo Penta IPS 1050 complete propulsion system is installed. The system features triple D13-800 main engines with total power of 1764 kW and IPS 3 fully integrated pod units.



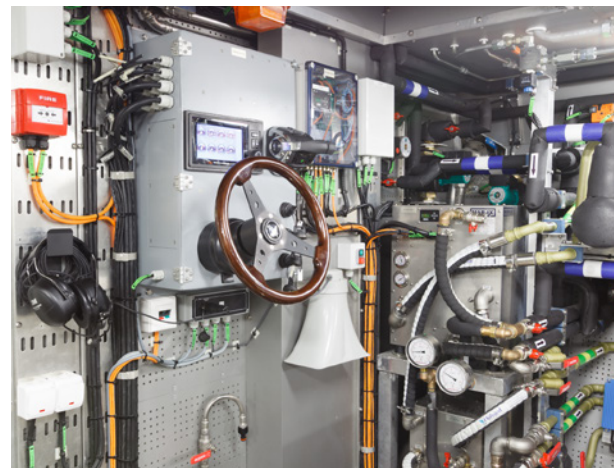
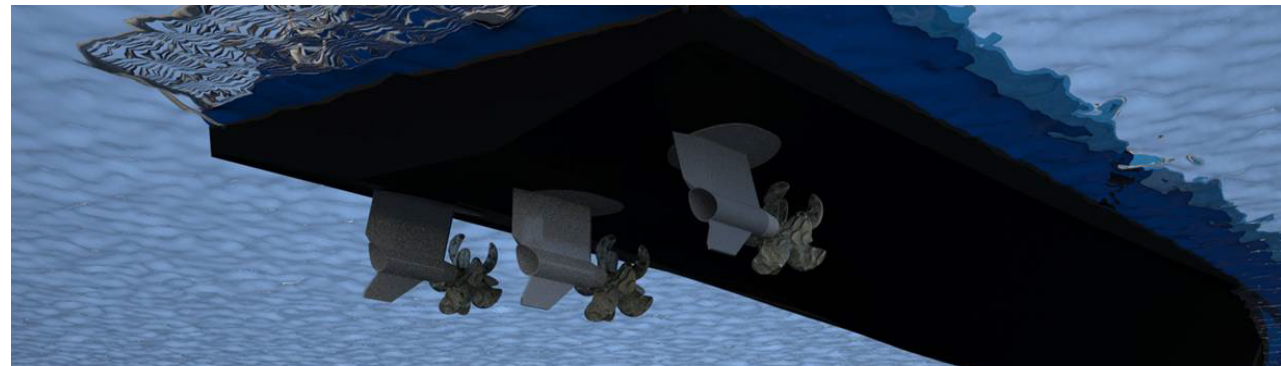
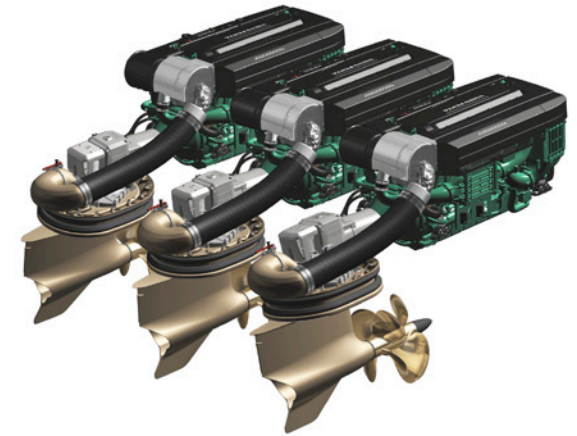


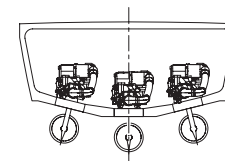
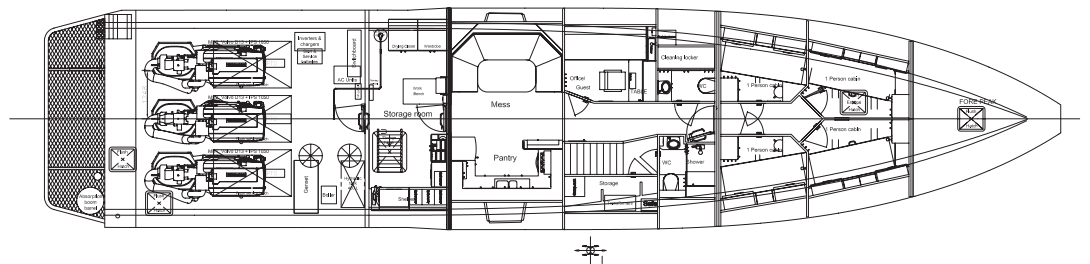
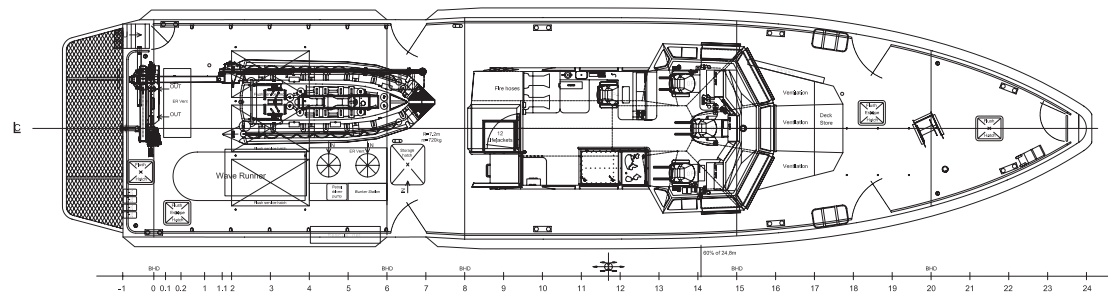
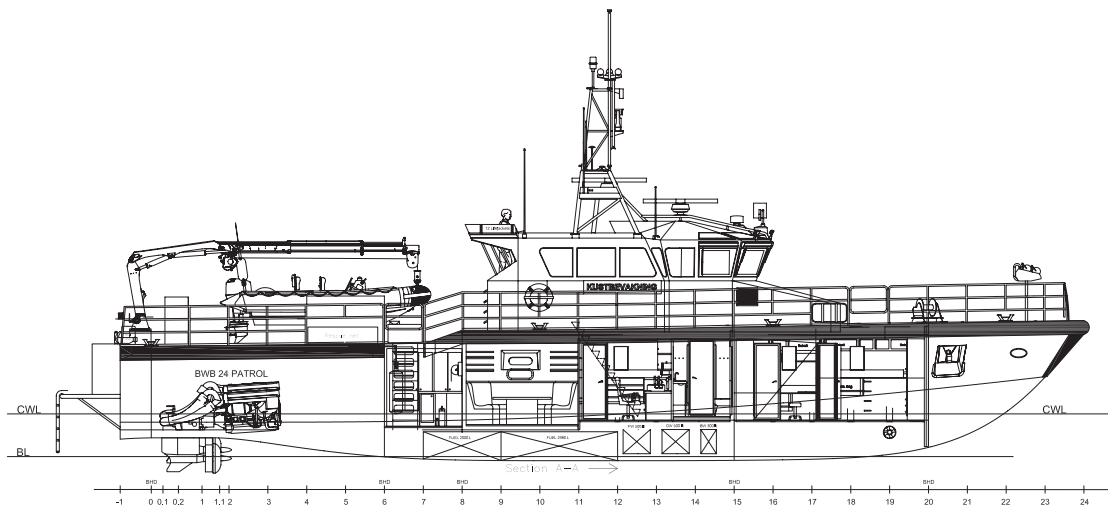
# Machinery & Propulsion

The vessel has top speed of 34 knots fully loaded whereas the time to accelerate from idle to 20 knots is only 7.5 seconds.

Up to 40 % lower fuel consumption over the whole speed range is creating great cost savings and reduced CO2 and NOx emissions.

The control system of the vessel is enhanced by a dynamic positioning system.





## KBV 312

BALTIC 2043 PATROL

### Main dimensions

Length overall: 26,5 m  
 Breadth: 6,2 m  
 Draught: 1,5 m  
 Displacement: 50 t  
 Power: 1764 kW  
 Speed: 34 kn  
 Range (estimated): > 600 Nm  
 Capacity: 5 persons  
 Noise level in wheelhouse: 55 dB(A) at full speed

### Ambient conditions

Air: -25°/ +40° C  
 Seawater: 0°/ +32° C

### Material & construction

Marine aluminium, ice strengthened

### Tank capacities

Fuel: 5000 l  
 Water: 500 l  
 Waste: 250 l

### Propulsion concept

Main engine: 3 x Volvo-Penta IPS 1050  
 or equivalent  
 Propulsion: 3 x IPS twin propellers  
 Bowthruster: 22 kW

### Users

Swedish Coast Guard - 5 units  
 Lithuanian Coast Guard - 1 unit



## BALTIC WORKBOATS AS

Nasva harbor, Nasva, Kaarma municipality, Saare County 93872, Estonia

T: +372 45 21140 F: +372 45 21145

info@bwb.ee, www.balticworkboats.ee