



Baltic
Workboats
shipyard



DIVINGBOAT

14.5 M STEEL WORKBOAT

TECHNICAL DATA:

MAIN DIMENSIONS

LENGTH LOA: 14.5 M
BREADTH: 4.5 M
DRAUGHT: 1.5 M
DISPLACEMENT: 23 T
POWER: 265 KW
SPEED: 10 KN
RANGE (ESTIMATED): 400 NM
NUMBER OF
COMPLEMENT: 6 PERSONS

AMBIENT CONDITIONS

AIR: -5° / +35°
SEAWATER: +5° / +32°

MATERIAL OF STRUCTURE: STEEL AND MARINE ALUMINIUM

USERS: PORT OF KLAIPEDA

TANK CAPACITIES

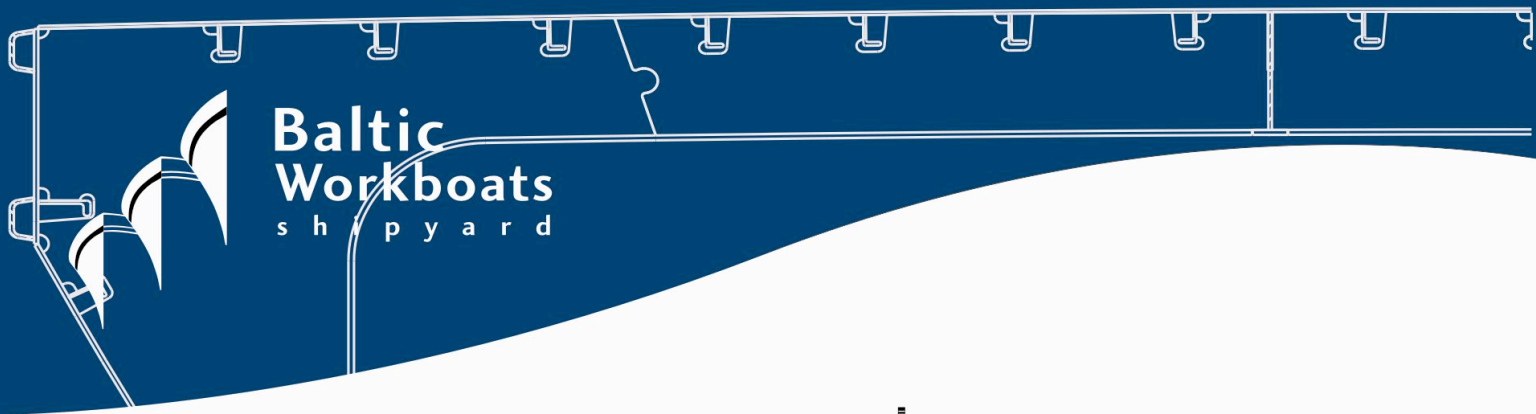
FUEL: 600-900 L
WATER: - 100 L
WASTE: - 100 L

PROPULSION CONCEPT

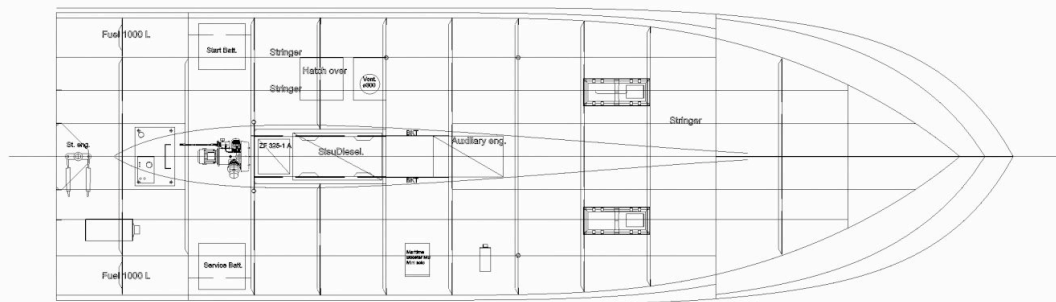
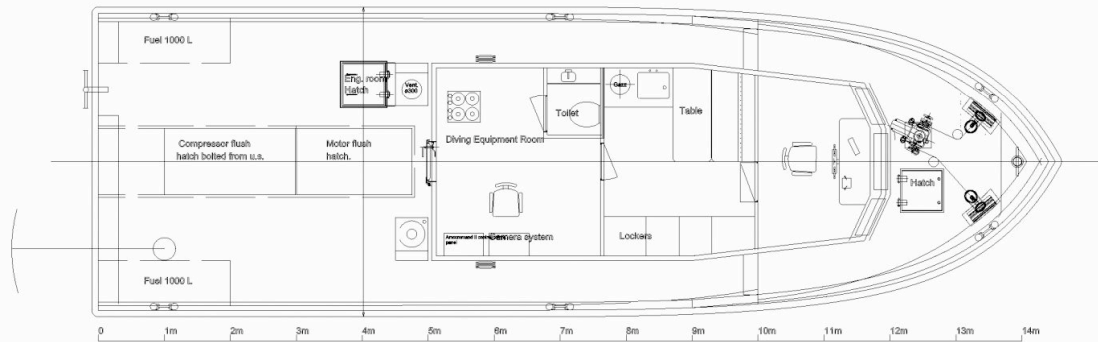
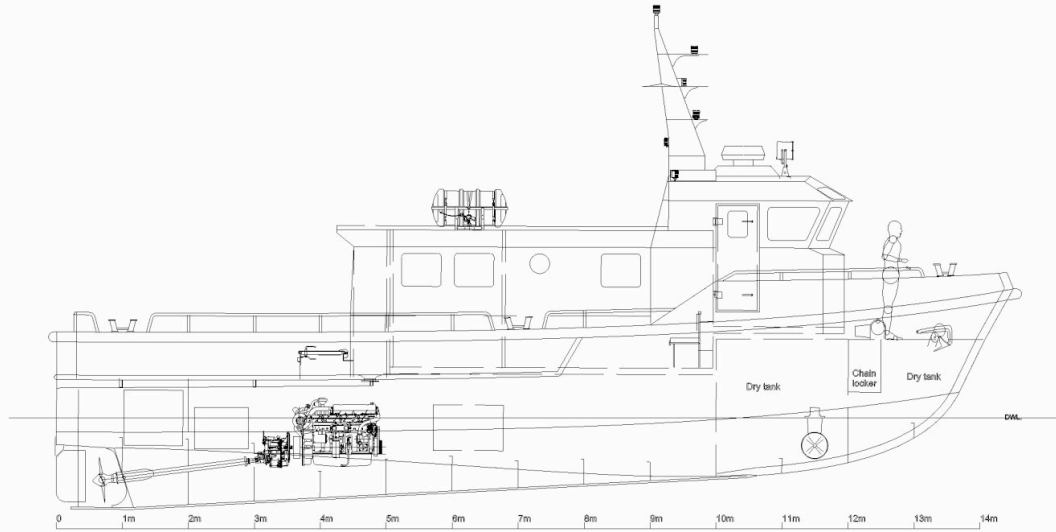
MAIN ENGINE: SISU 645
OR EQUIVALENT
GEARBOXES: TYPE ZF OR
EQUIVALENT
PROPULSION: 1 X PROPELLER



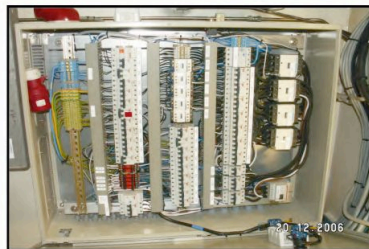
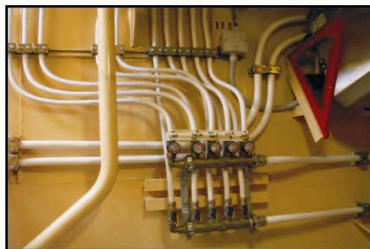
BALTIC WORKBOATS AS



**Baltic
Workboats**
shipyard



DIVINGBOAT
14.5 M STEEL WORKBOAT



BALTIC WORKBOATS AS

NASVA HARBOUR
NASVA, KAARMA V.,
SAARE MK 93872,
ESTONIA

PHONE: +372 45 21140
FAX: +372 45 21145
E/MAIL: INFO@BWB.EE
WWW.BALTICWORKBOATS.EE