

WIND FORCE II

22 METER WINDFARM SERVICE CATAMARAN



WIND FORCE II

22 METER WINDFARM SERVICE CATAMARAN

Main dimensions

Lenght overall: 22 m
Breath: 8 m
Draught: 1,85 m
Displacement: 68 t
Power: 2 x 900 kW / 2250 rpm
Speed: 24 Kn
Range (estimated): >500 Nm
Capacity: 3 crew
25 passengers
Deck load: 4 t
Bollard pull: 9 t
Classification: DNV
* 1A1 HSLC R1 Windfarm
Service 2

Material & construction

Marine aluminium

Ambient conditions

Air: -5°/ +35° C
Seawater: 0°/ +32° C

Tank capacities

Fuel: 9000 l
Water: 1600 l
Waste: 1600 l

Propulsion concept

Main engine: 2 x MTU10V2000M72
Gearboxes: 2 x ZF 3000 Series
Propulsion: 2 x FPP
Bowthruster: 2 x 50 kW

Users

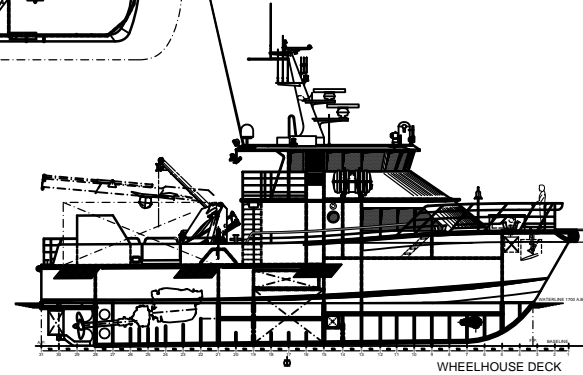
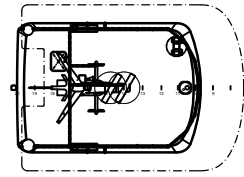
FRISIA Offshore GmbH, Germany



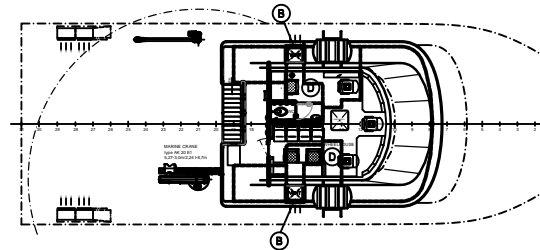
BALTIC WORKBOATS AS: NASVA HARBOUR, NASVA
KAARMA V, SAARE MK 93872, ESTONIA
T: +372 45 21140 F: +372 45 21145
info@bwb.ee www.balticworkboats.ee



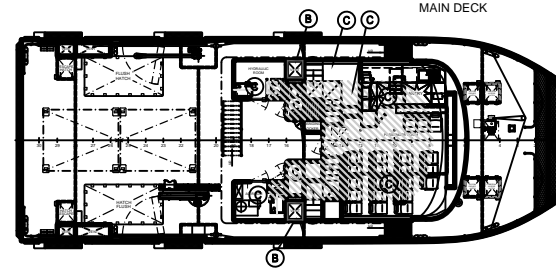
WHEELHOUSE TOP



WHEELHOUSE DECK



MAIN DECK



BELOW MAIN DECK

