

# PATROL 26 WP SAR

FAST SEARCH AND RESCUE VESSEL WITH IPS PROPULSION



More information: [sales@bwb.ee](mailto:sales@bwb.ee)

[www.bwb.ee](http://www.bwb.ee)



GENERAL

Hull material	Aluminium
Superstructure	Aluminium
Main functions	SAR, Maritime safety, Patrol
Classification	Lloyds Register

MAIN DIMENSIONS

Length overall (m)	26,5
Beam inc. fender (m)	6
Draught max (m)	1,1
Crew	4
Rescue capacity	20 people

TANK CAPACITIES

Fuel (L)	7300
Fresh water (L)	1000
Technical water (L)	500
Black water (L)	500
Gray water (L)	500

PERFORMANCES

Speed (kn)	30
Range @ 18 kn speed (nm)	700
Estimated fuel consumption l/h @ 18 kn	162
Noise level in wheelhouse @ 18 kn (dB)	58

PROPULSION SYSTEM

Main engines	3x Volvo Penta D13-1000
Total Power	3x735 kW
Propulsion system	3x Volvo Penta D13-IPS 1350
Bow thruster	Side-Power SH550

ELECTRICAL EQUIPMENT

Generators	Kohler 28EFKOZD 28 kW 3x230VAC 50Hz
------------	-------------------------------------

DECK LAYOUT

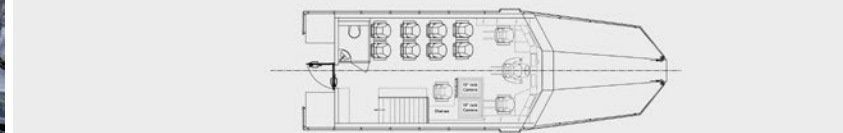
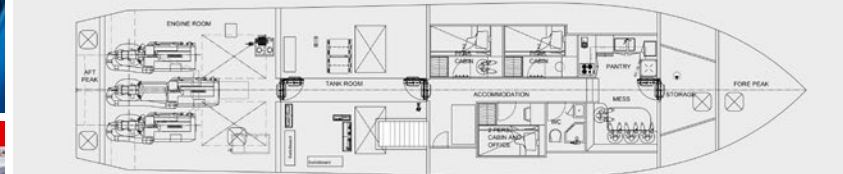
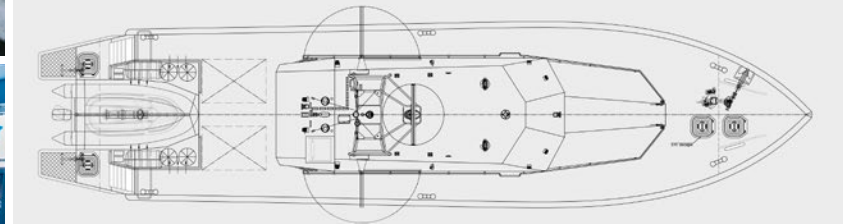
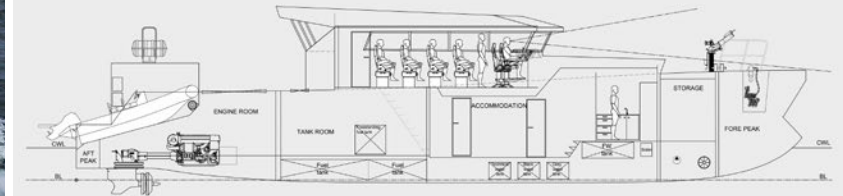
Anchor equipment	50 kg SHHP anchor, electric anchor winch
FiFi monitors and capacity	MARSIS MF06-EW 1800l/min @7bar (108m³/h)
Towing capability	Emergency towing of similar size vessels

ACCOMMODATION

Main deck	Toilet, seats for passengers
Below main deck	Shower, toilet, 3x 2 person cabins, mess, pantry
Air conditioning	Accommodation and wheelhouse

SPECIAL FEATURES

Lowered aft deck. Lookout position. MOB davits on both sides



USERS: Ukrainian Marine Search and Rescue Service

Baltic Workboats AS

Nasva Harbour  
Sadama 26, Nasva  
93872 Saaremaa, Estonia

Phone: +372 45 21140  
sales@bwb.ee  
balticworkboats.ee

